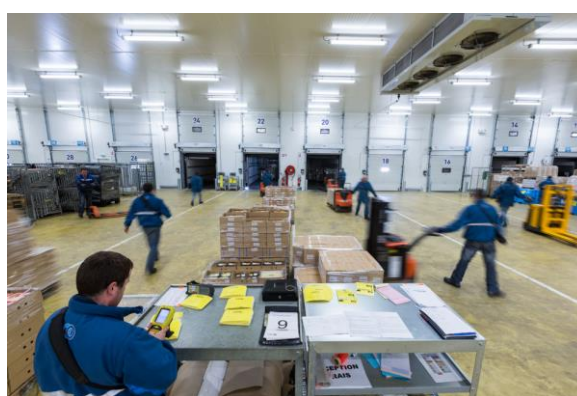


STEF opens its new Nantes Carquefou distribution site for all temperature-controlled food products

STEF has opened its new 7,500 m² distribution site, specialising in food handling, distribution and catering, located in Carquefou. With its strategic location, innovative building design and new value-adding services, STEF Transport Nantes Carquefou functions as a hub for the group's transport services in the Pays de la Loire region.



Jean-Marc Bruère, Deputy Executive Officer of STEF Transport: *"The opening of the STEF Transport Nantes Carquefou site confirms our status as the leading logistics network for all temperature-controlled food products. This site is a welcome addition to our already extensive transport network in the Pays de la Loire region which comprises 5 sites, 642 staff and 163 vehicles. It also reaffirms the group's commitment to sustainable development. Our desire to reduce transport distances and our carbon footprint were at the heart of this project".*

Danick Gascoin, Director of STEF Transport Nantes Carquefou: *"STEF Transport Nantes Carquefou is a purpose-built temperature-controlled site which enables us to monitor customer developments more closely and therefore provide a more targeted, high-quality urban delivery service. Frozen storage facilities and related services provided to industry are a huge plus and really help us to stand out in the market".*

Reduced transport distances and carbon footprint

By being close to our customers and major roads, we can reduce transport distances to a minimum. This idea was central to our choice of location for the new premises. STEF Transport Nantes Carquefou spans 6 hectares in the Carquefou industrial park, is directly accessible from the A11 motorway and is close to the Nantes ring-road. **This strategic location enables us to reduce transport distances by 110,000 km per year, thus saving 111 tons of CO₂.** The site has been designed with traffic flow at peak times in mind to allow a greater degree of flexibility.

With the STEF Logistique Carquefou facility located a mere 300 metres away, efficiency gains can be maximised through the co-ordination of logistics and transport activities. Vehicles can be loaded at the transport site and then at the logistics site without docking.

STEF Transport Carquefou serves the Loire-Atlantique (44) and the north of the Vendée (85) regions with over 50 daily departures carrying 400 tons of fresh and frozen products to more than 600 delivery points.

Deliveries can be made from the site to anywhere in France. Over 500 tons of goods are transported on a daily basis to over 500 destinations located outside of the Loire-Atlantique area.

Innovative site design to optimise deliveries to urban areas

STEF Transport Nantes Carquefou was designed in accordance with the group's site criteria i.e. on-time build, state-of-the-art cooling and energy saving technologies and environmental protection. The planning and building of the site within the space of twelve months constitutes a real feat. The construction contract was awarded by IMMOSTEF, the property arm of STEF, to EM2C. The building specifications and the ambitious time frame were adhered to and unforeseen issues which arose during the construction process were efficiently managed through close co-operation between IMMOSTEF and EM2C.

STEF Transport Nantes Carquefou has a 4,000 m² chilled (+2°C / +4°C) loading and unloading area which can hold up to 900 pallets.

The site is the first STEF facility to feature a second, 230m² loading and unloading area, wholly dedicated to urban deliveries. Six gates can accommodate 3.5 ton vehicles which are ideally suited for town centre deliveries.

STEF Transport Nantes Carquefou also boasts a 3,000 m² frozen (-25°C) storage facility which can accommodate up to 200 pallets. The site can easily accommodate multi-temperature deliveries, in particular for catering clientele, and A and B category frozen grouped deliveries on a nationwide scale.

Further site functions:

- LED lighting in all temperature-controlled areas,
- Thermal isolation of reinforced refrigerated areas,
- Heat pump linked to demand-controlled dual-flow ventilation system with heat recovery for company offices and common rooms,
- Rain-water recovery system.

Natural CO₂ fluid use favoured for frozen areas.

Developing new value-added services

In order to meet industry expectations relating to stock reduction, increased delivery fees, cost and delivery optimisation and carbon footprint reduction, STEF Transport Nantes Carquefou has developed added-value transport solutions such as bulk transport, the key to which is effective co-ordination and scheduling of destination points.

STEF Transport Nantes Carquefou has also been developing additional logistics services such as co-packing, repackaging, relabeling, container loading and unloading etc.

STEF Transport Nantes Carquefou

- Dual-temperature transport facilities : chilled (+2°C to +4°C) and frozen (-25°C)
- 160 staff
- Over 100,000 tons of products delivered per year
- 2 loading and unloading areas
 - o 1 230 m² chilled bay (+2°C / +4°C) dedicated to urban deliveries
 - o 1 4,000 m² chilled bay (+2°C / +4°C)
- 1 3,000 m³ frozen storage area (-25°C)

- 43 company vehicles of three different types including:
 - o 44 tons semi-trailers with a capacity of 24 or 33 pallets,
 - o 12 and 19 tons transporters
 - o 3.5 tons transporters
- 44 bay gates

STEF Transport Pays de la Loire

- 5 sites : Allonnes (72), Angers (49), Carquefou (44), Le Mans (72), Les Essarts (85)
- 642 staff
- 163 vehicles

About STEF

STEF is the European specialist in cold logistics for all temperature sensitive and agro food products. Our mission is to safely bridge the gap between industry and retailers. The group provides transport, logistics and information systems for all temperature-controlled deliveries (from -25°C to +18°C). The group is active in 8 European countries (Belgium, Spain, France, Italy, the Netherlands, Portugal, the United Kingdom and Switzerland) and in Tunisia. The group employs 14,500 staff and has 216 platforms and warehouses and more than 4,000 HGVs, half of which are company-owned. STEF's turnover for 2012 stood at €2,502.3 million.

For more information, please visit our website at www.stef.com.

Press contact: Catherine Marie

Tel: +33 (0)140 742 964 / +33 (0)635 231 088

catherine.marie@stef.com